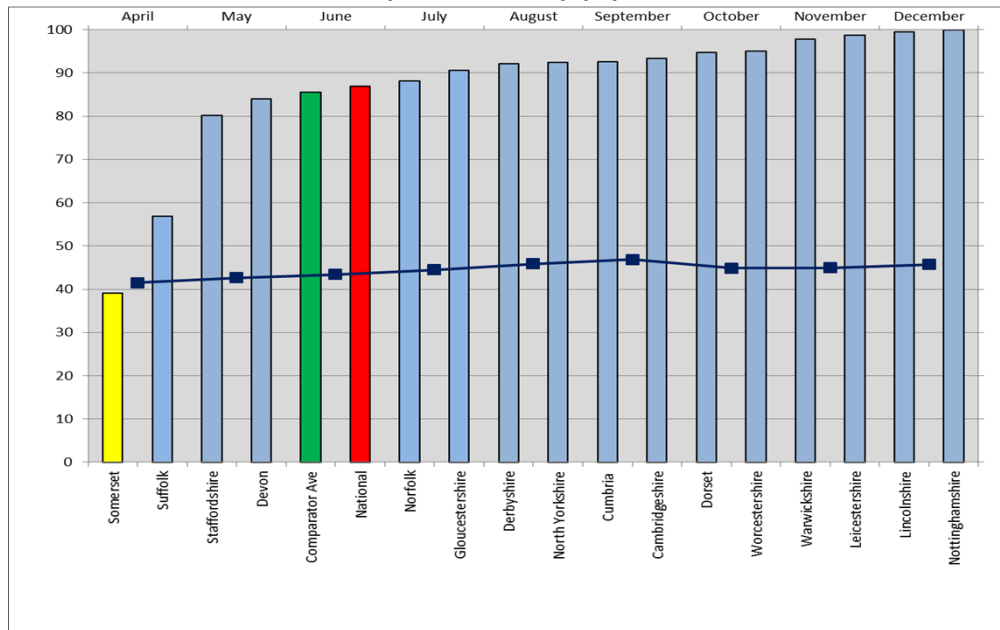


Scrutiny Report – Adult Social Care Performance:

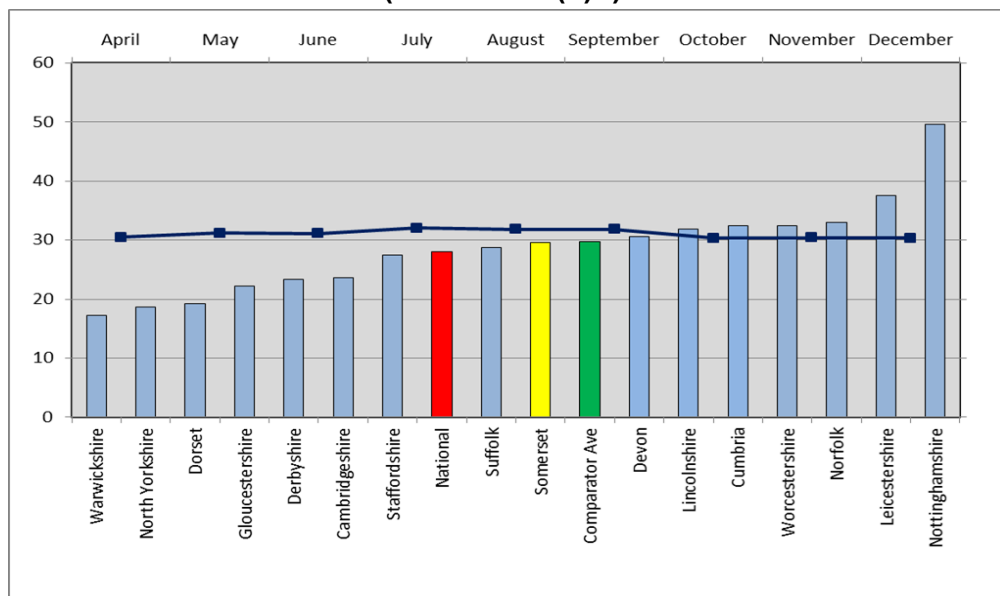
Tables A to F below show the 2015/16 outturn performance measures from ASCOF for both Somerset and its family group (bars) along with the current performance for Somerset in 2016/17 (as at December 2016 - line).

A. Proportion of people using social care who receive self-directed support (ASCOF 1C(1)a):



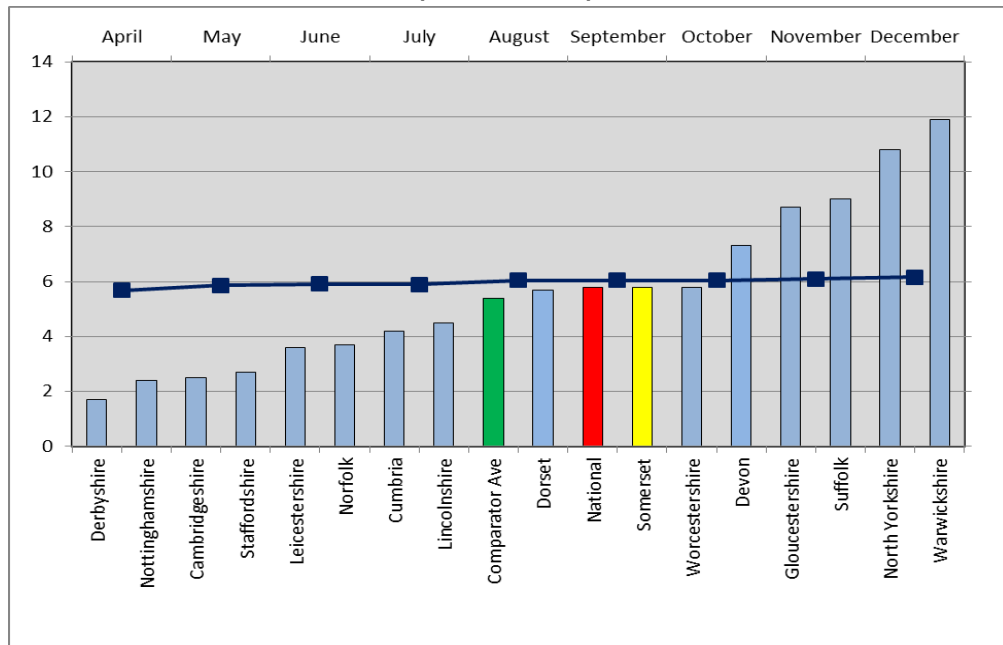
Commentary: Higher is better. Somerset's performance against this measure is poor and is significantly below both the national and comparator group average.

B. Proportion of people using social care who receive direct payments (ASCOF 1C(2)a):



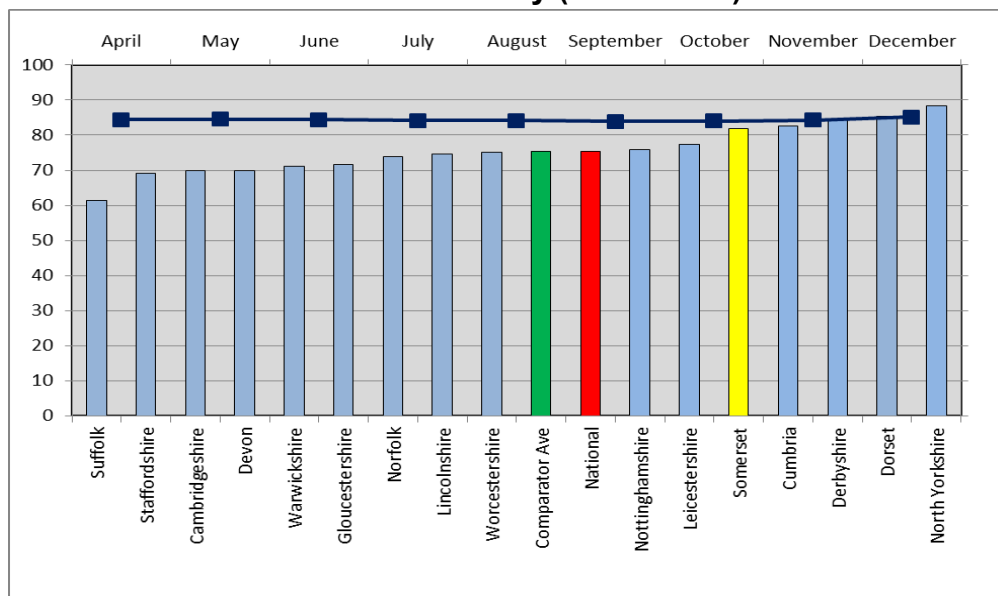
Commentary: Higher is better. Somerset's performance is good. It is above the national average and in line with the comparator group average. Current year (2016/17) performance is showing a slight increase compared to 2015/16.

C. Proportion of adults with learning disabilities in paid employment (ASCOF 1E):



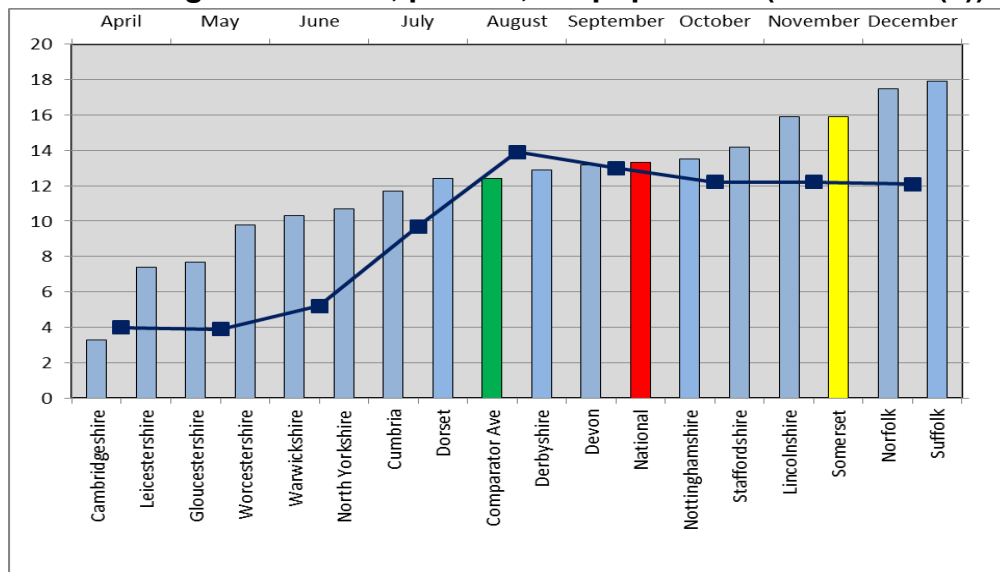
Commentary: Higher is better. Somerset's performance is in line with the national average and slightly above the average for the comparator group.

D. Proportion of adults with learning disabilities who live in their own home or with their family (ASCOF 1G):



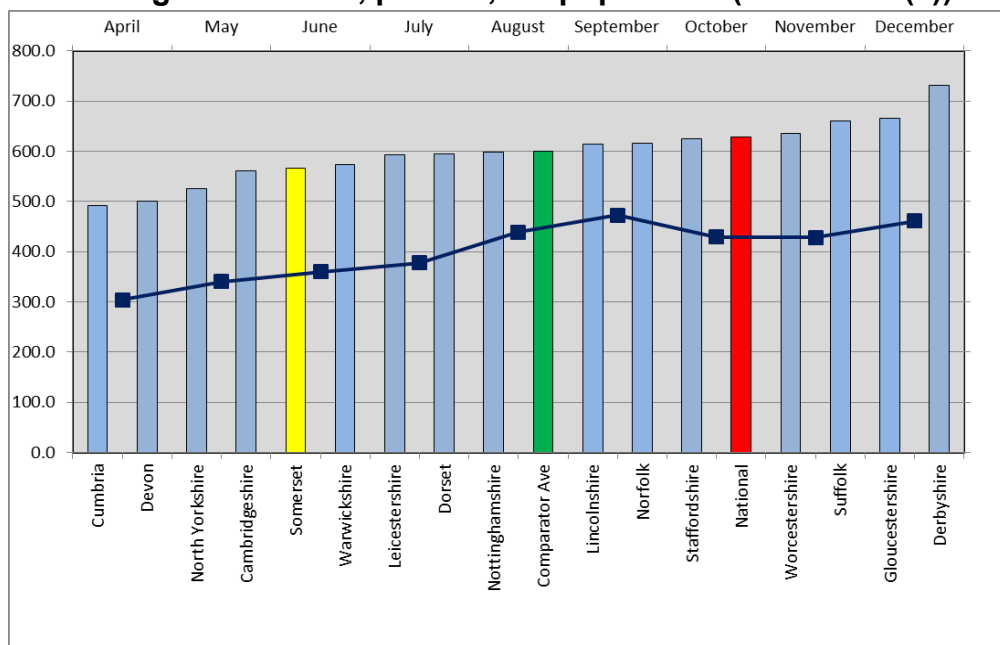
Commentary: Higher is better. Somerset's performance is good and is above both the national and comparator group averages.

E. Permanent admissions of younger adults (aged 18 to 64) to residential and nursing care homes, per 100,000 population (ASCOF 2A(1)):



Commentary: Lower is better. Somerset's performance in 2015/16 was poor. Placement numbers were above the national and comparator group averages and Somerset was one of the highest placing councils in the comparator group. Performance so far in 2016/17 is showing an improvement and is in line with last year's national average.

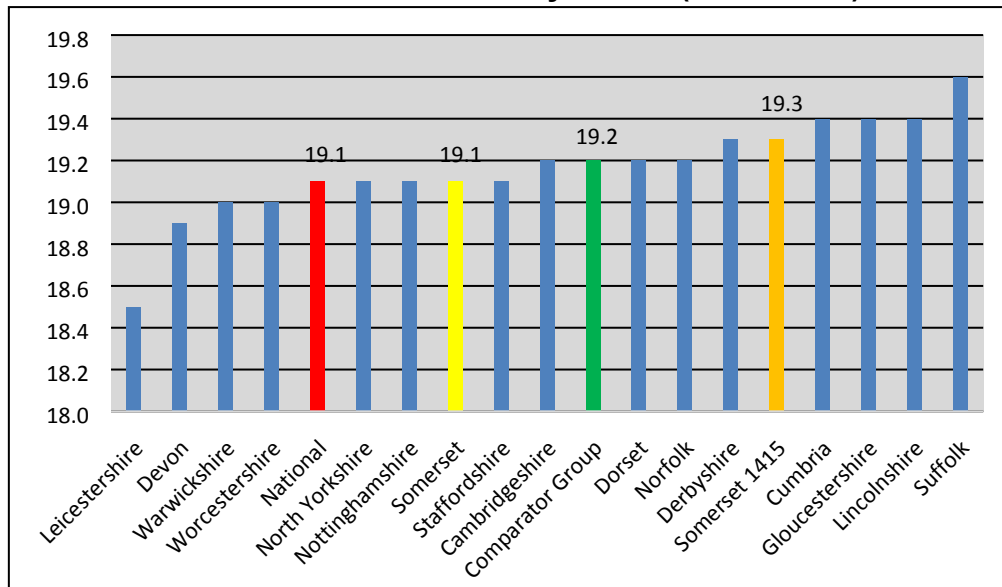
F. Permanent admissions of older people (aged 65+) to residential and nursing care homes, per 100,000 population (ASCOF 2A(2)):



Commentary: Lower is better. Somerset's performance in 2015/16 was below the national and comparator group averages. Current performance in 2016/17 shows a further improvement but the winter period could see an upwards movement.

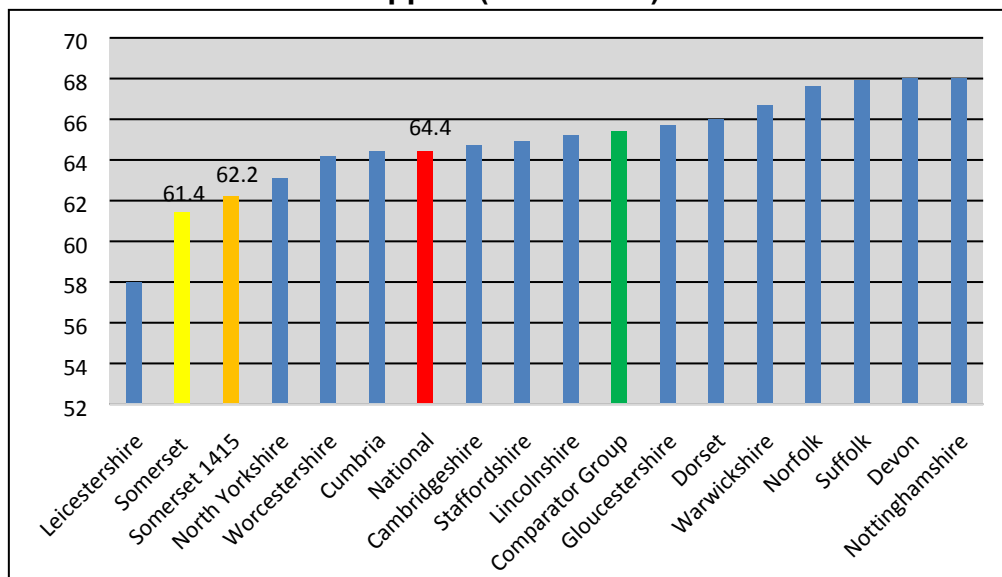
Tables G to J below show how Somerset compares to its family group in relation to a selection of measures from the annual Adult Social Care Survey undertaken in 2015/16.

G. Social Care Related Quality of Life (ASCOF 1A):



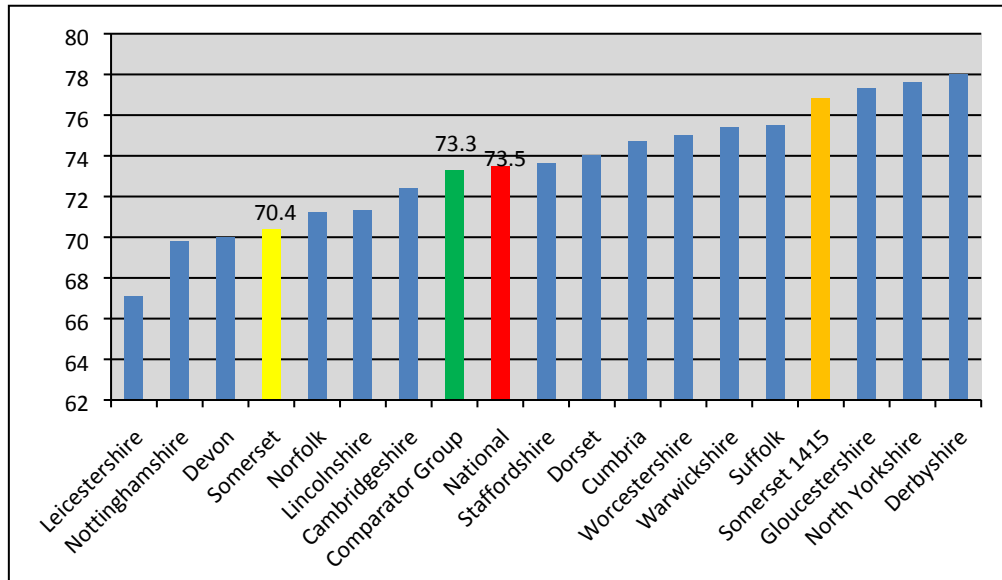
Commentary: Higher is better. Somerset performs adequately on this measure with our outturn the same as the national average but lower than the comparator group average. However Somerset's performance has decreased from 2014/15.

H. Overall satisfaction of people who use services with their care and support (ASCOF 3A):



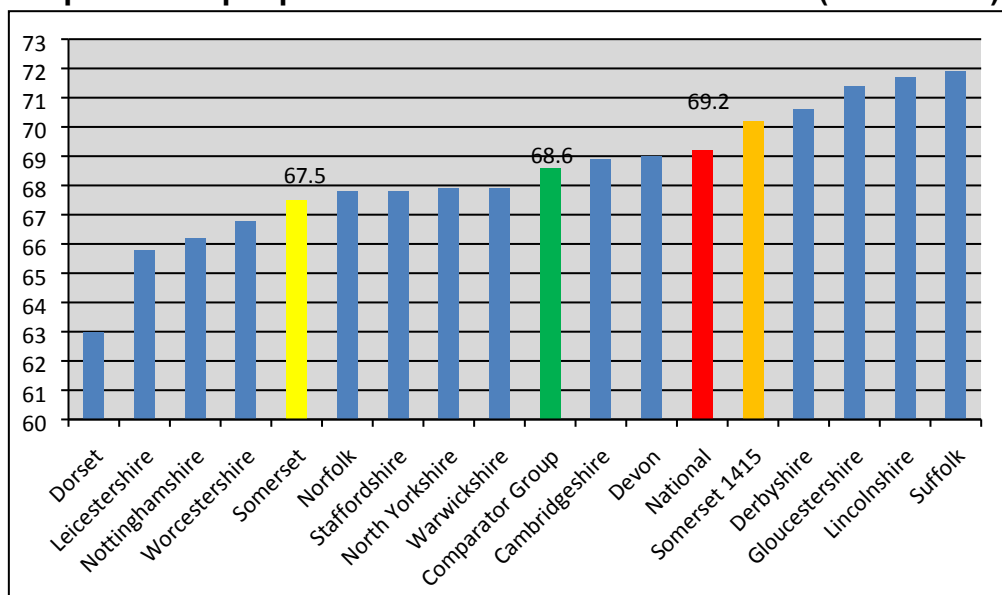
Commentary: Higher is better. Somerset performance is poor with our outturn falling below the comparator group and national average. Somerset's performance has decreased from 2014/15.

I. Proportion of people who use services who find it easy to find information about services (ASCOF 3D1):



Commentary: Higher is better. Somerset performs poorly on this measure with our outturn lower than both the national and comparator group average. Somerset's performance has decreased considerably from 2014/15.

J. Proportion of people who use services who feel safe (ASCOF 4A):



Commentary: Higher is better. Somerset's performance has decreased from 2014/15 with our outturn falling lower than both the national and South West average.